

WHERE WE'RE LOCATED

ODYSSEY I

Burnaby
New Westminster
Surrounding areas

518 Howard Avenue, Burnaby
604-299-6377

ODYSSEY II

Vancouver
Richmond
North Vancouver

2875 St George Street, Vancouver
604-879-8853

NEXUS

Vancouver
Downtown Eastside

786 Powell Street, Vancouver
604-209-5408

WHEN WE'RE OPEN

Please call specific programs or check website for current information include program hours, drop-in schedule and food supports.

Open to youth aged 13-24.

OR SCAN HERE
FOR MORE INFO!



ABOUT BGC

At BGC South Coast BC (BGC), we believe that every kid and youth is amazing. And we know that by seeing and hearing them, they'll believe it, too! That is why, for over 85 years, BGC has been giving them what they deserve: a place to belong when they aren't at home or in school.

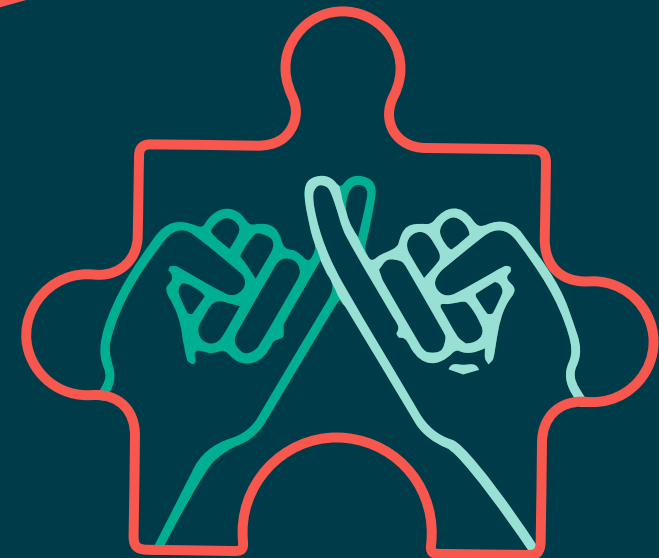
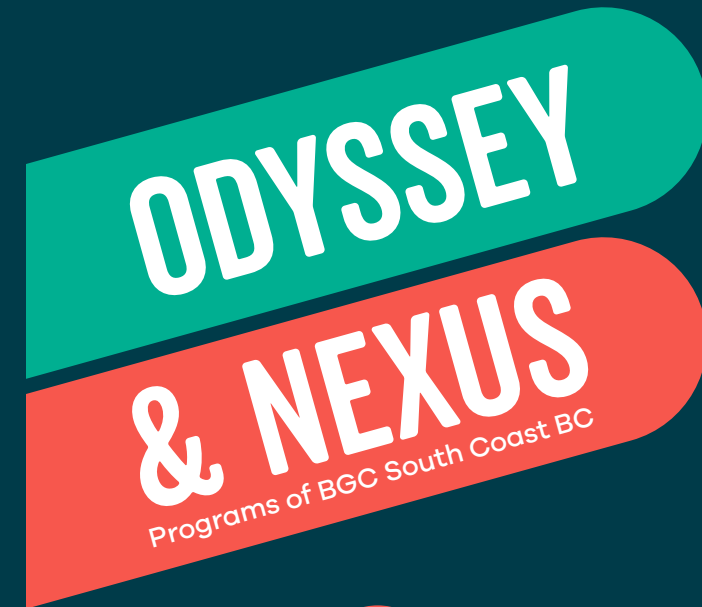
Our 11 neighbourhood Clubs give kids and youth a place to be amazing, safe, and have fun! We also provide substance use services and support to some of the most vulnerable youth in our community. We offer counselling, family support, and employment services for youth and families. And we also offer a summer wilderness camping adventure, Camp Potlatch, which is second to none.

CONTACT US FOR MORE INFO:

Central Office
2875 St. George Street
Vancouver, BC
www.bgcbc.ca | info@bgcbc.ca
604.879.6554



South Coast BC



SUBSTANCE USE SERVICES

WHAT DO WE DO

BGC's Substance Use Services provides support to youth and their families with **substance use** concerns.

Our program staff have a special focus on substance use. Each participant is paired with a staff, who assesses their needs, meets them in locations most comfortable for them, and helps with access to counselling spaces.

We offer a supportive atmosphere where youth feel comfortable exploring substance use concerns and consider options for obtaining a healthier lifestyle. We also provide referrals services to other programs.

WHO ARE THESE SERVICES FOR?

- Youth (ages 13-24) who are concerned about their own substance use
- Youth who are concerned about their friend's or family's substance use
- Family members, or service providers, who are concerned about a youth's substance use



SERVICES WE PROVIDE

- Individual Counselling
- Family Counselling
- Drop-in
- Social/Recreational Activities
- Crisis Intervention
- Prevention Services
- Referrals
- Networking with other Community Service Agencies
- Education on Alcohol and Drugs



HOW TO ACCESS OUR SERVICES

- Youth can self-refer.
- There are **no fees** for counselling services.
- **Anyone** can make a referral – Parents/Guardians, Family, Friends, Community and/or medical service providers, etc.
- Contact the office closest to the youth and we will be happy to take your referral.
- You will be asked to provide a name and contact information.

OUR APPROACH

We believe that dealing with substance use requires a "journey of growth." This journey is unique for each individual and driven by them. We believe individuals have the right and capacity to determine how they would like to change, the strength to make these changes, and the right to decide who they would like to involve in their change process.

We believe that substance use is part of a complex interaction between biological, psychological, spiritual, and social factors that are unique to each person.

Our programs operate within a harm reduction model.

OTHER PROGRAMS

Parents Together is a program for parents concerned about their teens' behaviour including, but not limited to, substance use. Support groups are in the Lower Mainland.

Contact 604.325.0556 for more information.

